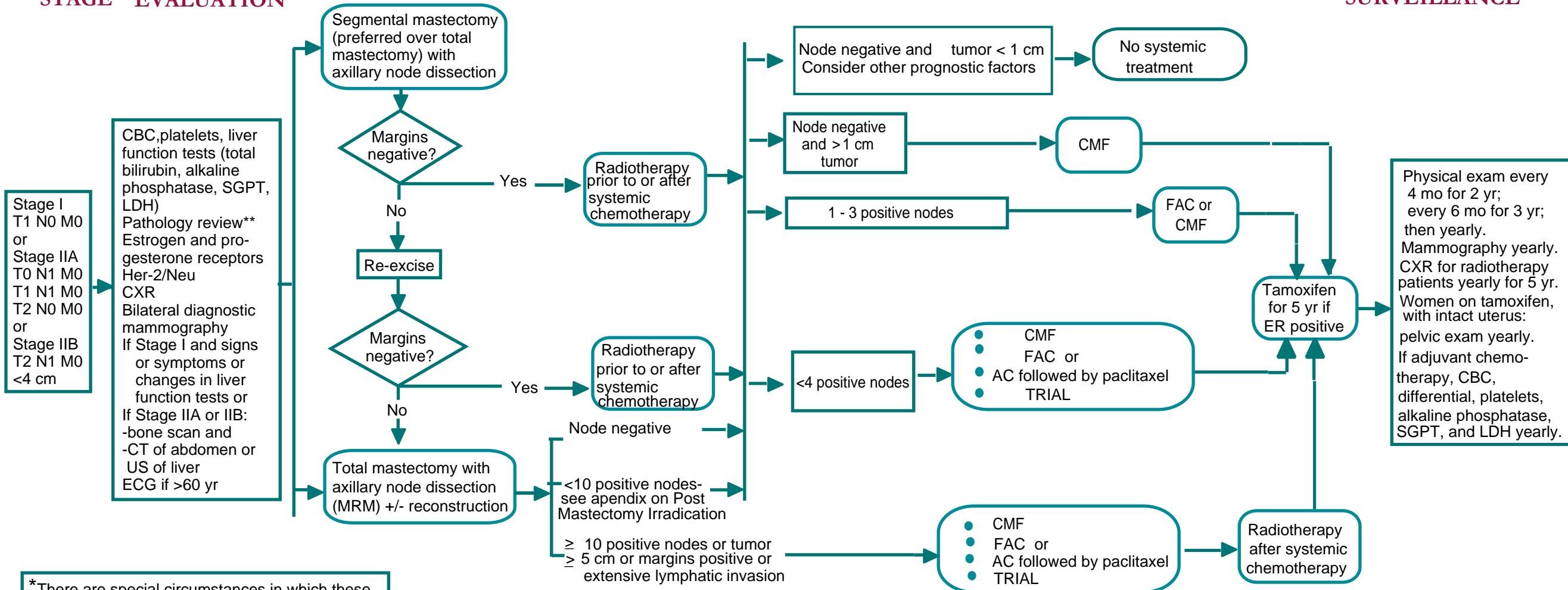


CLINICAL INITIAL STAGE EVALUATION

LOCAL TREATMENT

SURVEILLANCE



*There are special circumstances in which these guidelines do not apply. These include, but are not limited to:

- Sarcoma and lymphoma of the breast
- Special histologies (i.e., tubular, medullary, pure papillary, or colloid)
- Patients with gross multicentricity or diffuse microcalcifications
- Patients with lupus, scleroderma, and possibly other collagen vascular disorders
- Patients with limited life expectancy because of comorbid illness
- Cancer during pregnancy

** Pathology Review to include:

- Tumor size
- Differentiation
- Nuclear grade
- Histologic type
- Lymph node status
- Intramammary vascular/lymphatic invasion
- Her-2/Neu and receptor status

AC = Doxorubicin and cyclophosphamide
 FAC = Fluorouracil, doxorubicin, and cyclophosphamide

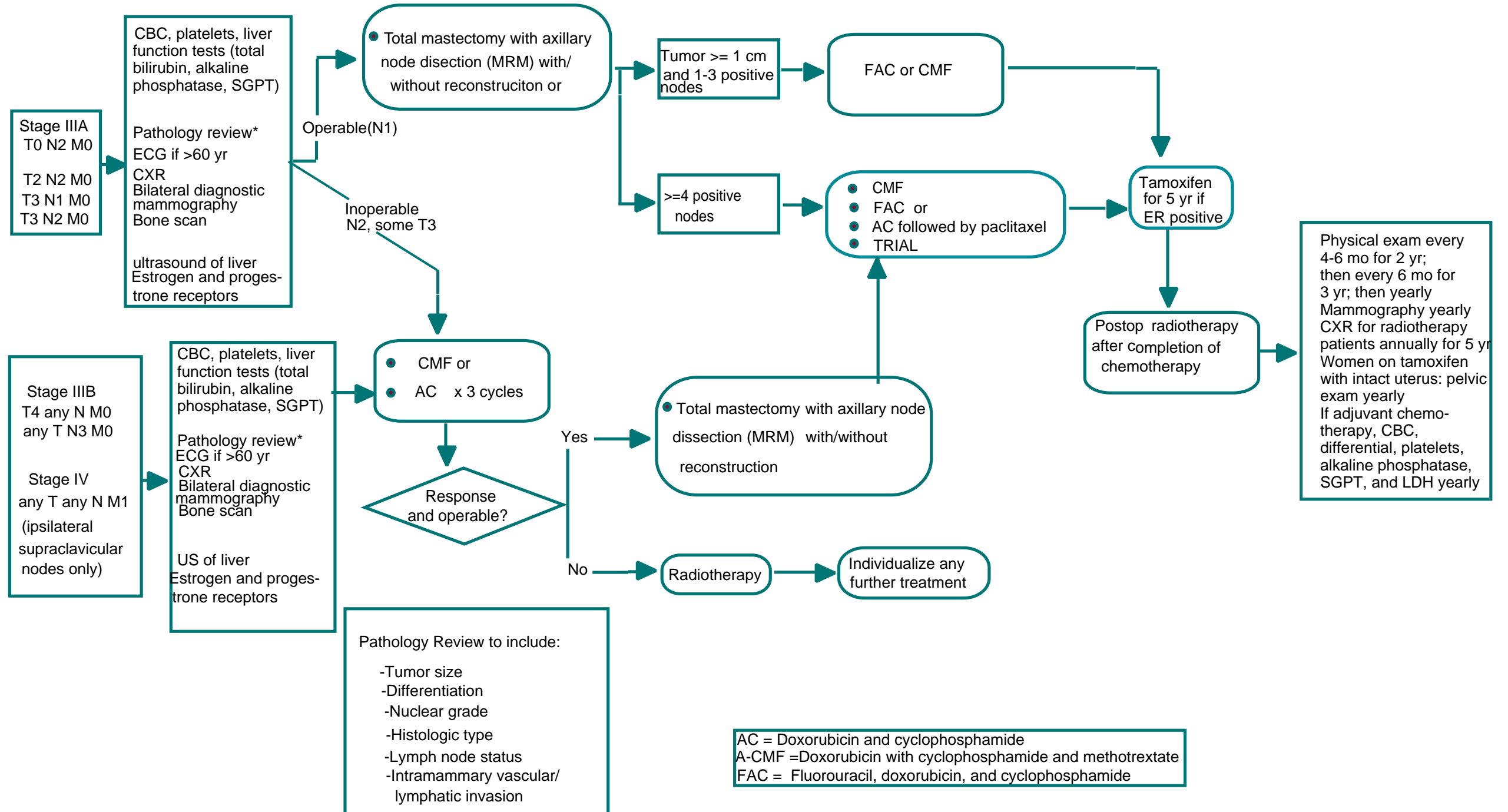
CLINICAL STAGE

WORKUP

LOCAL AND SYSTEMIC TREATMENT

SURVEILLANCE/ FOLLOW-UP

Note: If available, clinical trials should be considered as preferred treatment options for eligible patients.



EVALUATION FOR RECURRENCE OR METASTASIS

TREATMENT FOR RECURRENCE OR METASTASIS

